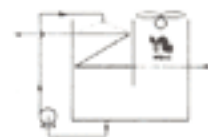
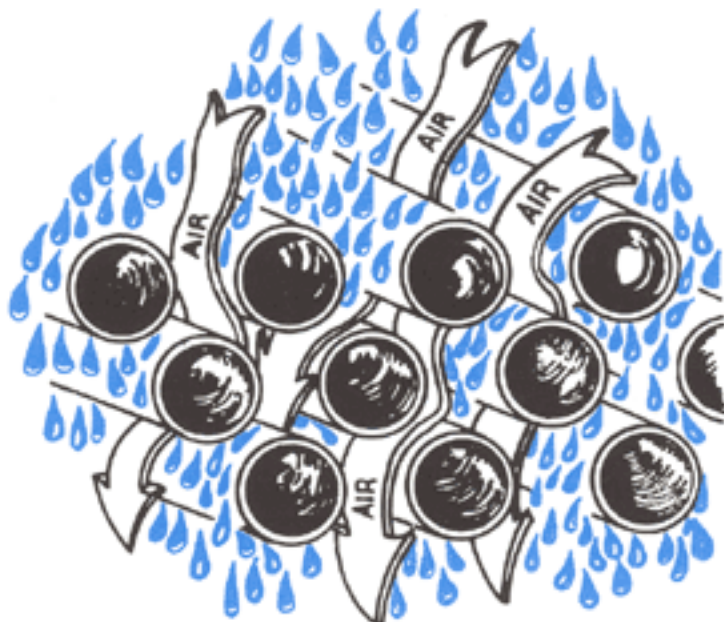


# WET SURFACE AIRCOOLERS

## MANAGEMENT OF THE CONTINUOUS WATER CASCADE



AIR MINGLES WITH CASCADING WATER IN CO-DIRECTIONAL FLOW



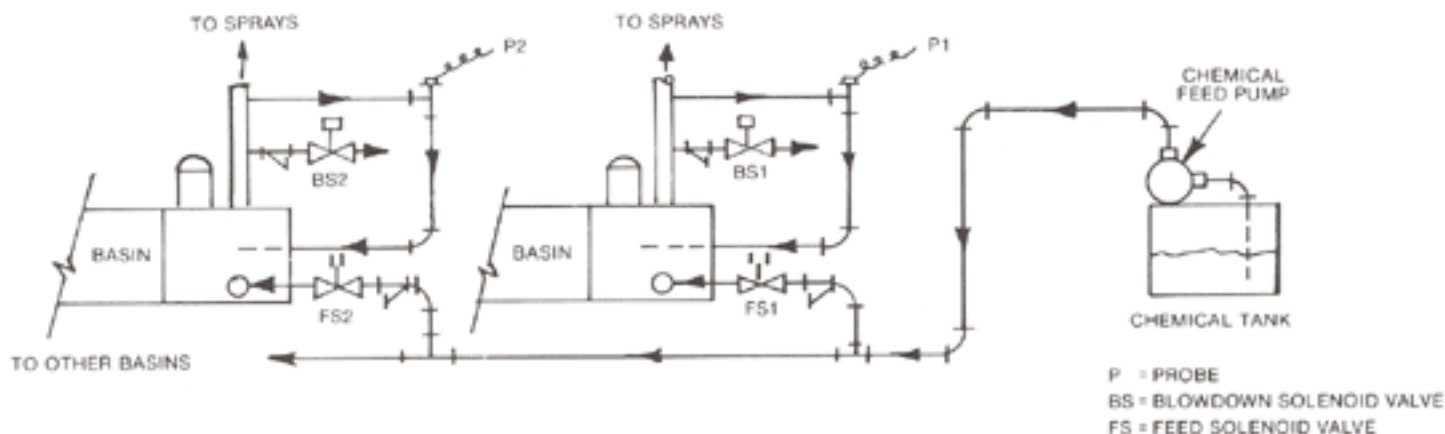
Recirculated water which continuously deluges the tubular heat transfer surface surrenders a small portion as water vapor to the coolant air. The concentration of solids dissolved in the water is thereby increased.

Water in contact with air will also tend to be changed chemically.

The concentration of solids is controlled by intermittent blowdown in response to the electric conductivity of the water.

The treatment chemicals lost by this blowdown are replaced by the properly adjusted delivery rate of a chemical feed pump.

A single treatment controller and a single chemical feed pump are used for a multiplicity of water basins by scanning and probing these basins on a time cycle. A prewired control panel is supplied for this purpose.



Thermal Products, Inc.  
 964A Route 146  
 Clifton, Park, NY 12065  
 (518) 877-0231  
 sales@thermalproducts.com  
 www.thermalproducts.com

 **Niagara Blower Company**  
 670 Ontario Street, Buffalo, NY 14207